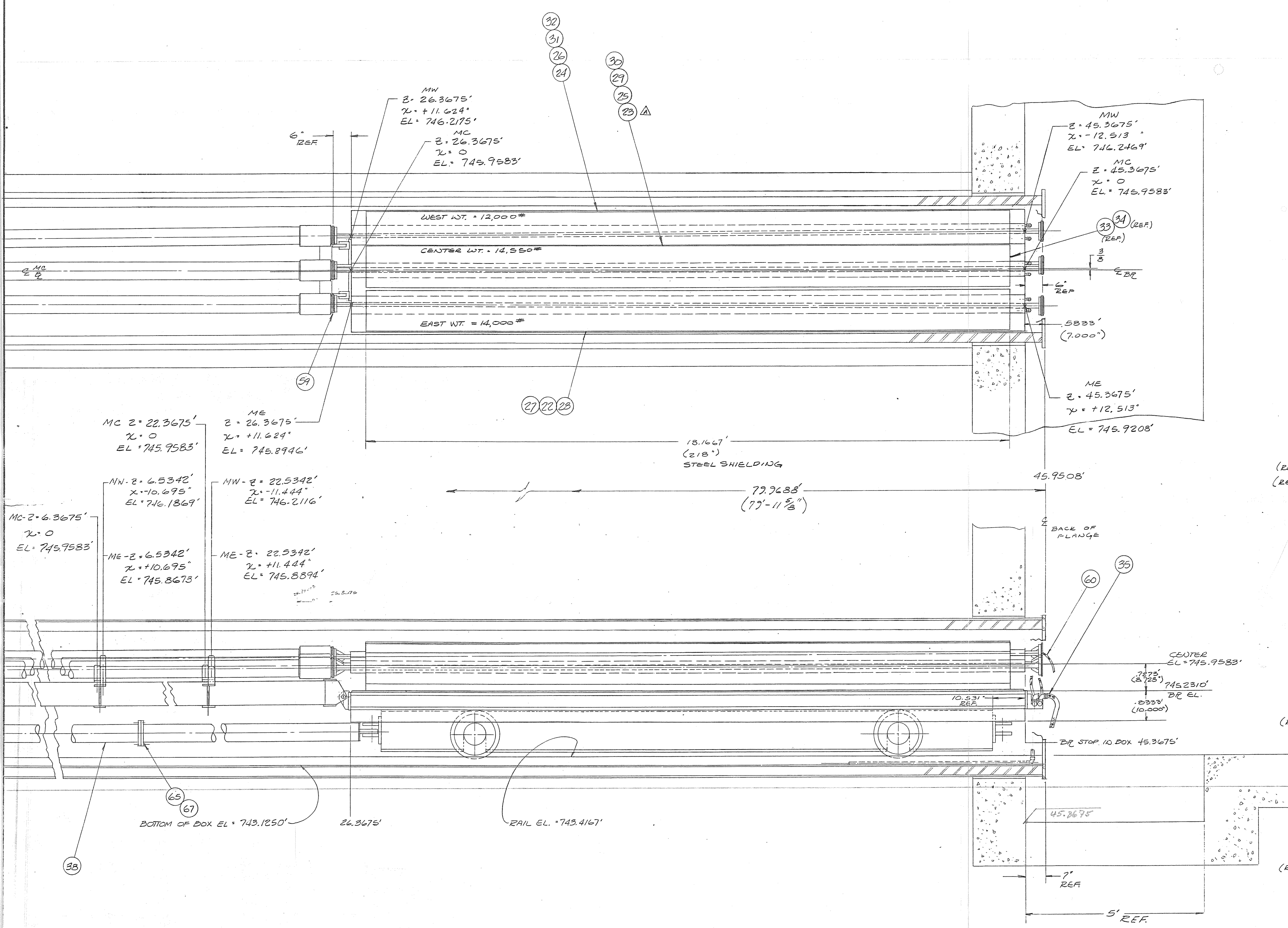


REV.	DESCRIPTION	DRAWN	DATE
A	REPLACED OLD CTR. COL. ASSY #MD-174082 WITH NEW CTR. COL. ASSY #MD-174072 1/4" 1/2" TARGET ORIENTATION BY 90°	VLJ	7-5-82



68	3/8" UNCL-2A X 1 1/2 LG HEX NDS	12
67	1/2" UNCL-2B HEX NDS	8
66	1/2" UNCL-2A X 1 LG HEX NDS	7
65	1/2" UNCL-2A X 2 1/2 LG HEX NDS	8
64	LEVOLD-HEARNS KF 33 CATRAYS RING ASSY #83-23 SST/VITON O-RINGS	6
63	LEVOLD-HEARNS KF 33 CATRAYS RING ASSY #83-23 SST/VITON O-RINGS	6
62	LEVOLD-HEARNS KF 33 CATRAYS RING ASSY #83-23 SST/VITON O-RINGS	6
61	FLEXOWEL SBT CONV. HOSE #1132-5 (1/2" ID XOM) W/ EXT. WELC	3
60	AMMONIA 1/8" RAD TO SST COSE HOSE #3211 W/ GLE TIE END FITTING	4
59	PRESSURE SENSITIVE O-RING SEAL #5421 (6.036 I.D.) LEAD PLATED	3
58	EAGLE URETHANE O-RING O-RING #18 DIA	15
57	AEROQUIP MAGNETIC RETAINING CLAMP #A1 MV5564-KS-473T	21
56	LUD INC. 530 SERIES SEM	3
55	AEROQUIP MAGNETIC RETAINING CLAMP #A1 MV5564-KS-470-T	2
54	IF USED WITH O-RING RETAINING PRESSURE SENSITIVE O-RING SEAL #5421 (4.068 ID) LEAD PLATED	2
53	QUINCY #10-23524 SEAL SEAT	2
52	2826-MC-174502 6" DIA ADAPTER TUBE	1
51	2826-MC-174503 4" DIA ADAPTER TUBE	2
50	0641-MB-23597 4" VACUUM TUBE FLANGE	6
49	0641-MC-23581 4" x 6" LG BELLONS/FLG ASSY	2
48	0641-MC-23639 6" TO 4" ADAPTER	2
47	1226-MC-109641 6" VACUUM WINDOW ASSY	6
46	1226-MB-31804 6" x 6" LG BELLONS/FLG ASSY	1
45	0641-MB-23279 6" VACUUM COUPLING	1
44	ME-174490 SEM STAND ASSY	1
43	2826-MC-174410 6" DIA X 2 1/2 LG BELLONS/FLG ASSY	3
42	MC-174415 BEAM PIPE CLAMP - ME	1
41	MC-174414 BEAM PIPE CLAMP - ME/MW	2
40	MD-174413 BEAM PIPE STOP	1
39	MC-174455 CLAMP - TARGET DRIVE	1
38	MD-174406 SHIELD CAR SPACER BAR	2
37	MD-174407 SHIELD CAR ASSY	2
36	ME-174256 SINGULAR SWIC STAND	1
35	ME-174366 MANIFOLD ASSY	1
34	LE-174188 LAYOUT DUSTM END MESON TARGET BOX	1
33	LE-174085 COLLIMATOR & SHIELDING LAYOUT	1
32	MD-75755 LOWER SHIELD BLOCK - WEST	1
31	MD-174080 UPPER SHIELD BLOCK - WEST	1
30	ME-95899 LOWER SHIELD BLOCK - CENTER	1
29	MD-95900 UPPER SHIELD BLOCK - CENTER	1
28	ME-174078 LOWER SHIELD BLOCK - EAST	1
27	MD-174079 UPPER SHIELD BLOCK - EAST	1
26	MD-174084 WEST COLLIMATOR INSERT	1
25	MD-174083 CENTER COLLIMATOR INSERT	1
24	ME-174077 WEST COLLIMATOR	1
23	MD-272114 CENTER COLLIMATOR	1
22	ME-174076 EAST COLLIMATOR	1
21	ME-174241 TARGET DRIVE ASSY	1
20	ME-174233 HITCH ASSY	1
19	ME-174068 BEAM DUMP ASSY	1
18	ME-174254 ADJ. SCREEN	6
17	MD-174255 TUBE STAND	1
16	1226-MC-109641 6" VACUUM WINDOW ASSY	2
15	LE-174081 VACUUM LIDE LAYOUT - PRE DUMP	1
14	MC-174087 VACUUM TUBE ADAPTER	1
13	ME-174250 DOUBLE SWIC STAND ASSY	1
12	0826-ME-24573 SHORT SWIC (REFER TO 0826-ME-13880)	3
11	6024-ME-78016 SUB-PLATE ASSY - MAGNET	2
10	6024-ME-78004 BASE - MAGNET STAND	2
9	0641-MD-23530 SEAL SEAT	19
8	2826-MC-174456 6" DIA X 1 1/2 LG BELLONS/FLG ASSY	1
7	MD-174404 VACUUM PIPING - MC 2	1
6	MD-174405 VACUUM PIPING - ME/MW 2	2
5	MD-174373 MOD. ON WIDE GAP 61 FOR MAIN BEAM TUBE	1
4	6031-ME-43379 MODIFIED WIDE GAP B1	1
3	3826-ME-38363 CHAMBER ASSY	1
2	ME-174437 BEDPLATE ASSY	2
1	1210-ME-12210 TARGET BOX RAIL INSTALLATION	1

ITEM NO.	PART NO.	DESCRIPTION OR SIZE	QTY. REQ.
PARTS LIST			
UNLESS OTHERWISE SPECIFIED ORIGINATOR EMVILLEGAS 10-82			
FRACTIONS DECIMALS ANGLES DRAWN VLJ/JAC/ASEN 2-4-82			
CHECKED E.L. JACOBSON 8/16/82			
APPROVED			
USED ON			
MATERIAL			

FERMI NATIONAL ACCELERATOR LABORATORY
 UNITED STATES DEPARTMENT OF ENERGY
ME SON TEV II TARGET TRAIN ASSY
 EXPERIMENTAL AREAS DEPT
 SCALE: 1-1/8" FILMED DRAWING NUMBER: 121A-ME-174072 REV. A
 SHEET 2 OF 2